


adobe Illustrator

PEN TOOL

When learning Adobe Illustrator, learning the Pen Tool allows you create anything you can imagine. For each exercise below, use the directions to create the lines below. ● A blue dot, indicates you need to click and release. ● A red dot, indicates when you click on a blue, you do not release, but instead drag the handle to this place. ● A green dot, indicates that you need to drag the handle to a new place by holding down the ALT key at the same time.


PEN TOOLS

■



Pen Tool


(P)



Anchor Point Tool

(Shift+C)


+



Add Anchor Point Tool

(+)

-




Delete Anchor Point Tool


(-)

Before you start, make sure your Pen Tool Properties set like this:

Appearance




Fill



Stroke

3 pt

▼









Opacity

100%

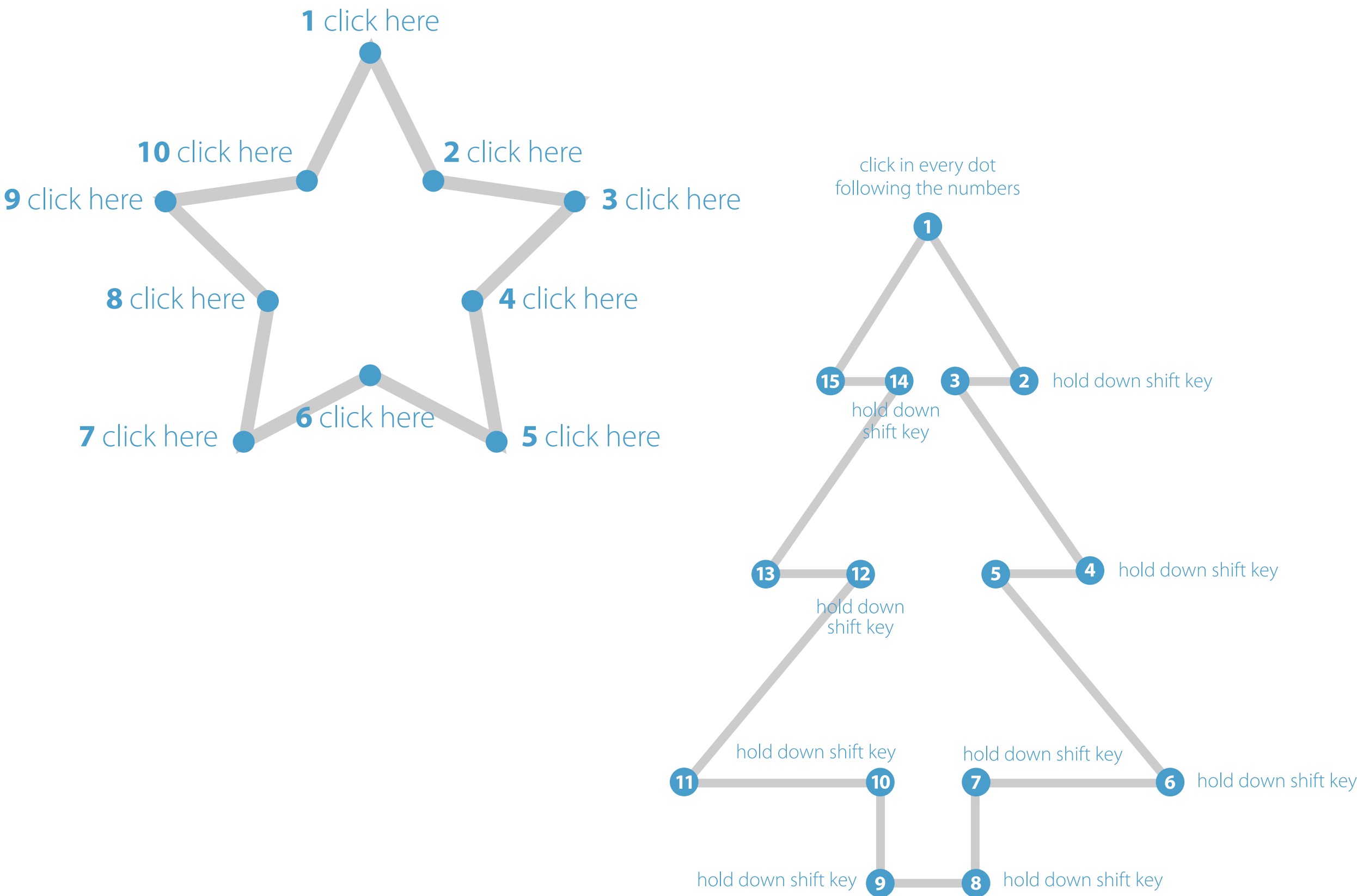
>

PEN TOOL BEHAVIOR SIGNS

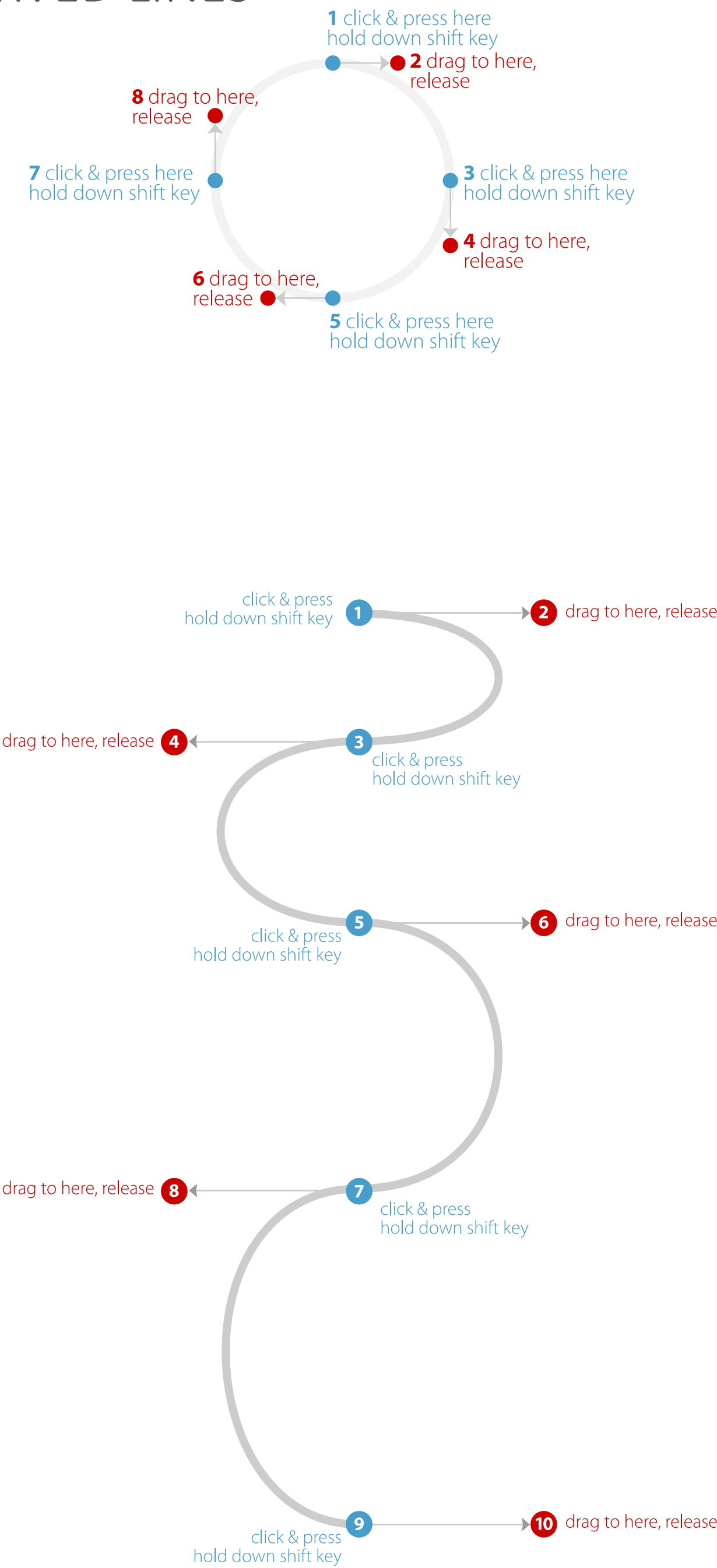
These symbols will display at times when using the Pen Tools, so before you start, make sure you know what each of them mean!

-  starting a new path
-  add an anchor point to the path
-  corner point sign
-  closing the path
-  add to/continue a path
-  delete a anchor point on the path

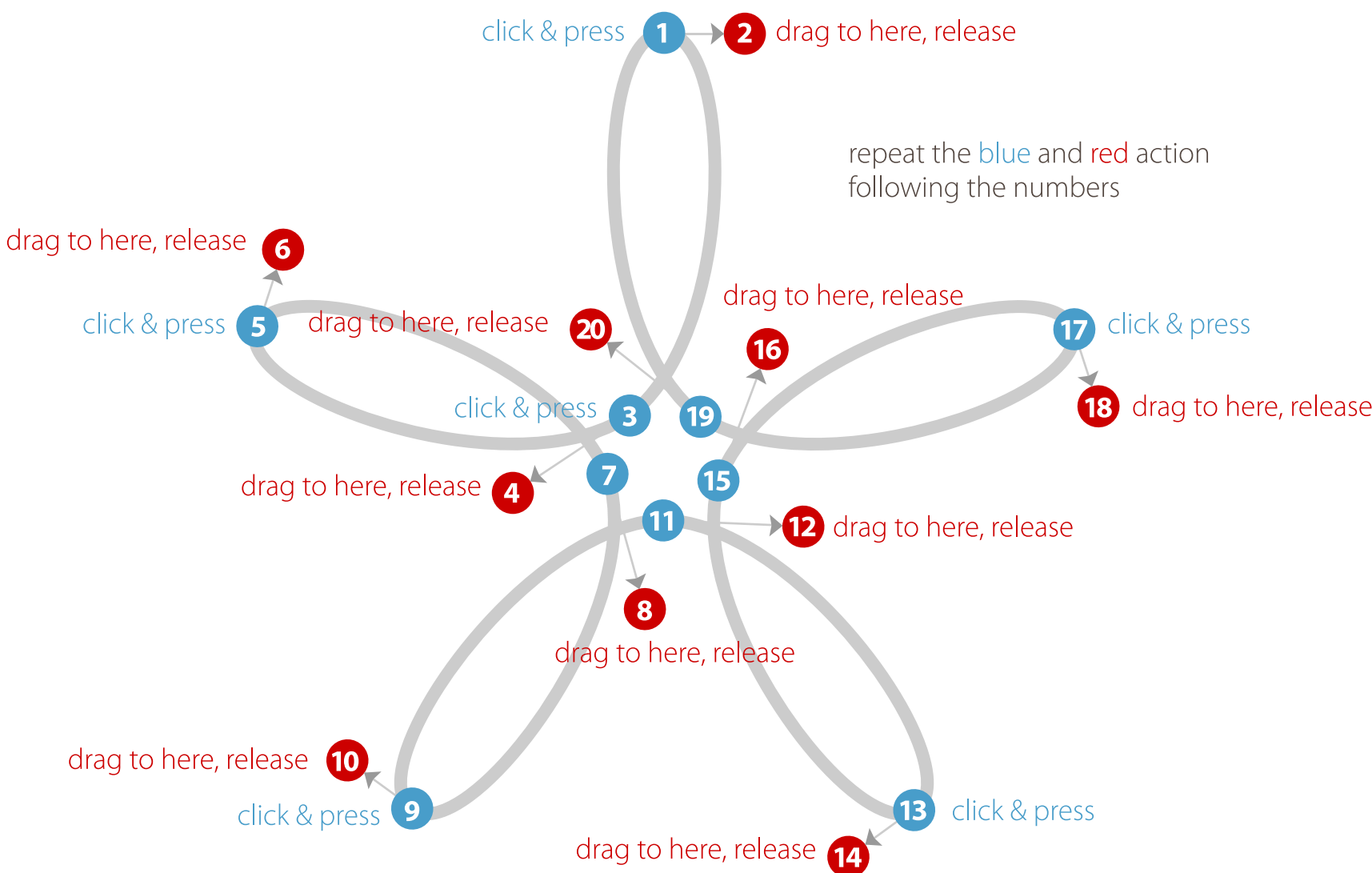
1. STRAIGHT LINES



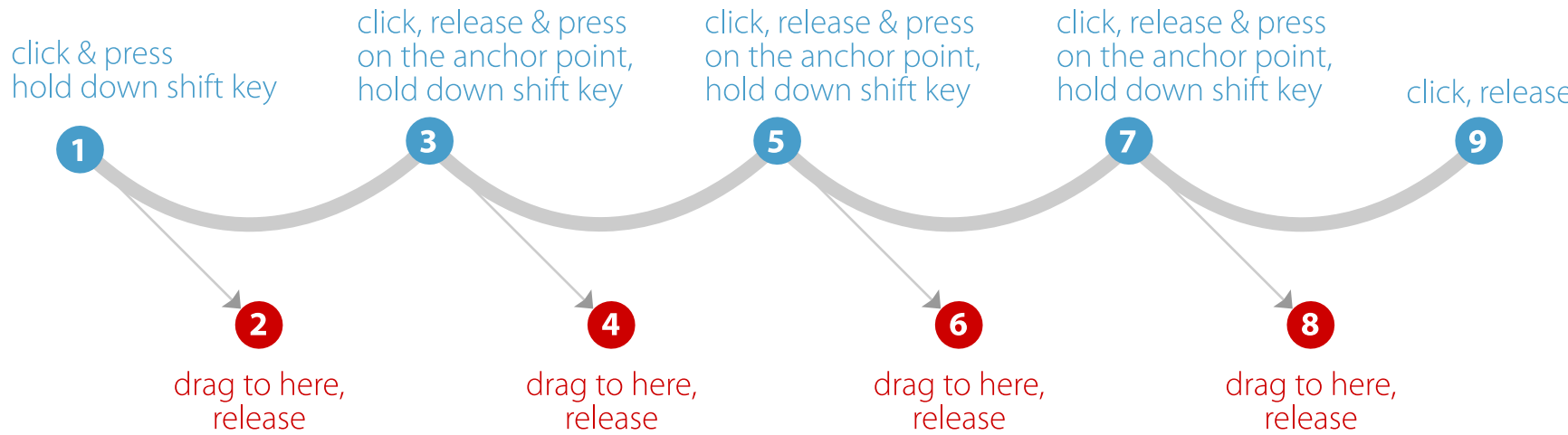
2. CURVED LINES



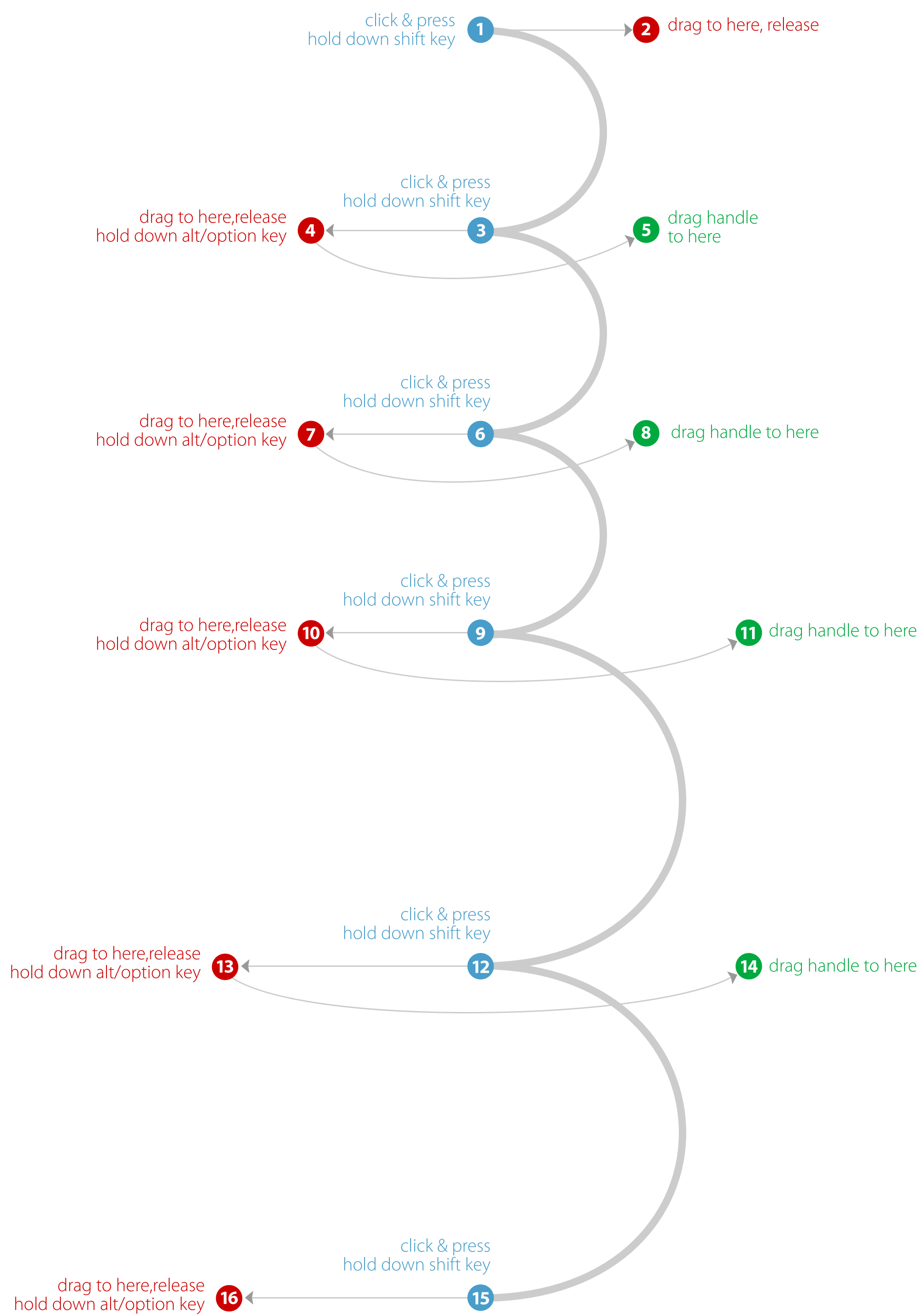
3. CURVED LINES



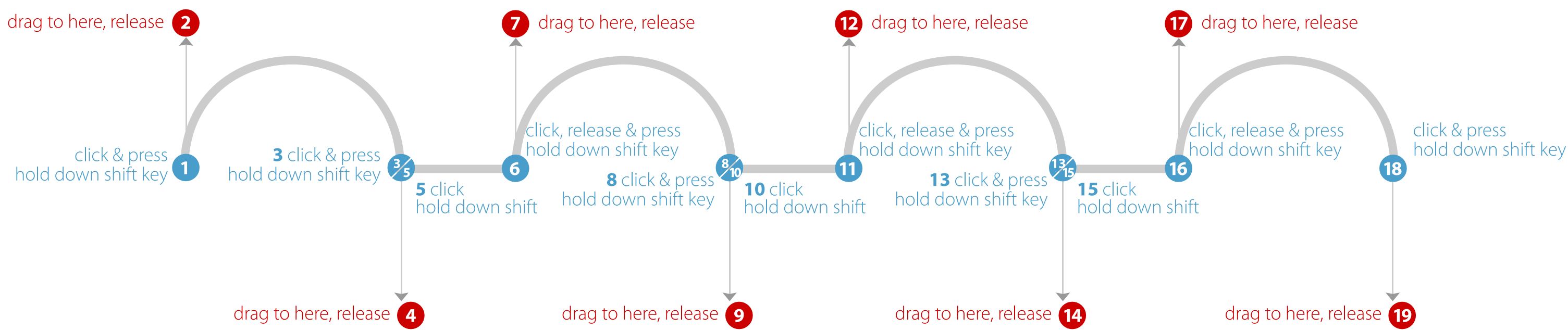
4. CURVES with CORNER POINTS



5. CURVED LINES with CORNERS



6. COMBINING CURVES with STRAIGHT LINES



clicking/clicking & pressing



dragging a handle



dragging a handle of an existing anchor point

7. CURVES with CORNER POINTS



8. CURVES with CORNER POINTS and ADJUSTED HANDLES

